



PAKISTAN NOTICES TO MARINERS

WEEKLY EDITION 12

Notice: 33 - 39(T)/22

26 MAR 2022

Copies of these Notices can be obtained gratis from Mercantile Marine Department and PN Chart Depot / NAVAREA IX Headquarters, 11 Liaquat Barracks Karachi. The same can be downloaded from web: hydrography.paknavy.gov.pk.

CONTENTS

- I NOTICES TO MARINERS**
- II REPRINTS OF RADIO NAVIGATIONAL WARNINGS**
- III CORRECTIONS TO SAILING DIRECTIONS**
- IV MARINE INFORMATION**

Mariners are requested to inform the Hydrographic Department, Naval Headquarters, 11 Liaquat Barracks, Karachi, Pakistan, immediately on the discovery of new dangers, or suspected dangers to navigation and of changes or defects in aids to navigation noticed in NAVAREA IX and of shortcomings in PAK charts or publications.

Tel : + 92-21-48506151
 + 92-21-48506152
Fax : + 92-21-99201623
 + 92-21-35867737

E-mail : hydropk@paknavy.gov.pk
 hydrpk@gmail.com

Web : hydrography.paknavy.gov.pk.

MUHAMMAD WASIM
Captain Pakistan Navy
Hydrographer

Hydrographic Department, Naval Headquarters, 11 Liaquat Barracks, Karachi 75530, PAKISTAN

PART – I**NOTICES TO MARINERS****33*/22 UNITED ARAB EMIRATES - Depths. Legends.****BA Chart 3404 (INT 7213) (Panel A, Saqr Port (Mīnā Saqr))** [*previous update 882/22*] WGS84 DATUM

Insert	depth, <i>I</i> ₇ , enclosed by 2m contour	(a) 25° 57'·887N., 56° 03'·079E.
Delete	depth, <i>2</i> ₉ , close NW of:	(a) above
Amend	legend to, <i>Dredged to 6·8m</i> (2022), centred on:	25° 57'·850N., 56° 03'·064E. 25° 56'·944N., 56° 03'·512E.

Source: Admiralty Notice to Mariners No. 1014*/2022.

34/22 IRAN - Legend.**BA Chart 3173** [*previous update 4220/21*] WGS84 DATUM

Amend	legend to, <i>Buoyed Channel</i> , centred on:	27° 04'·91N., 56° 06'·26E
-------	--	---------------------------

Source: Admiralty Notice to Mariners No. 1053/2022.

35/22 UNITED ARAB EMIRATES - NM Blocks.**BA Chart 3778** [*previous update 2877/21*] WGS84 DATUM

Insert	the accompanying block A, centred on:	24° 17'·3N., 52° 39'·2E.
	the accompanying block B, centred on:	24° 15'·9N., 52° 39'·2E.

BA Chart 3779 [*previous update 4000/21*] WGS84 DATUM

Insert	the accompanying block, centred on:	24° 17'·6N., 52° 39'·2E.
--------	-------------------------------------	--------------------------

BA Chart 3780 [*previous update 4000/21*] WGS84 DATUM

Insert	the accompanying block, centred on:	24° 17'·1N., 52° 39'·0E.
--------	-------------------------------------	--------------------------

Source: Admiralty Notice to Mariners No. 1069/2022.

36*/22 UNITED ARAB EMIRATES - Depths.**BA Chart 3404 (INT 7213) (Panel A, Saqr Port (Mīnā Saqr))** [*previous update 1014/22*] WGS84 DATUM

Replace	depth, <i>5</i> ₂ , with depth, <i>4</i> ₅ , and extend 5m contour W to enclose	25° 58'·795N., 56° 02'·975E.
---------	---	------------------------------

Source: Admiralty Notice to Mariners No. 1087*/2022.

37(P)/22 UNITED ARAB EMIRATES - Works. Channel. Dredged areas. Reclamation area. Light-beacon. Buoy. Radar beacon.

1. There are numerous changes to charted detail in Mugharraq Port and its approaches.
2. A new buoyed channel (Western Channel), dredged to 8·0m has been established between positions 24° 11'·48N., 52° 33'·14E. and 24° 11'·11N., 52° 34'·00E.
3. The Mugharraq Port Basin, centred on position 24° 10'·99N., 52° 34'·12E., has been dredged to 8·0m.
4. Reclamation has taken place and a new wharf has been established, centred on position 24° 10'·93N., 52° 34'·07E.
5. A light-beacon, *Fl.Y.5s*, has been established in position 24° 10'·87N., 52° 34'·13E.
6. A west cardinal light-buoy, *VQ(9)15s*, has been established in position 24° 11'·65N., 52° 33'·01E.
7. A radar beacon, *Racon(M)*, has been established at the safe water buoy in position 24° 12'·40N., 52° 31'·89E.
8. Mariners are advised to navigate with caution in the area and consult the local port authority for the latest information.
9. These changes will be included in the next New Editions of Charts 3179, 3778, 3780 and 3951 to be published early 2022. (WGS84 DATUM)

BA Charts affected - 3179 (INT 7229) - 3778 - 3780 - 3951 (INT 7241)

Source: Admiralty Notice to Mariners No. 1018(P)/2022.

38(P)/22 UNITED ARAB EMIRATES - Works. Restricted areas.

1. Works are taking place on the east side of Šīr Banī Yās. For vessels not engaged in the works, restricted areas, entry prohibited, have been established, bounded by the following positions:
 - * 24° 20'·42N., 52° 38'·79E.
 - * 24° 20'·94N., 52° 39'·83E.
 - * 24° 22'·23N., 52° 38'·94E.
 - * 24° 21'·77N., 52° 38'·05E.
 and

- * 24° 18'·16N., 52° 38'·50E.
- * 24° 17'·87N., 52° 39'·11E.
- * 24° 19'·02N., 52° 39'·63E.
- * 24° 19'·20N., 52° 38'·63E.

2. Mariners are advised to navigate with caution in the area.
3. Charts 3179, 3778, 3779 and 3780 will be updated when full details are available.
4. Former Notice 3072(P)/21 is cancelled.
*Indicates new or revised entry.
(WGS84 DATUM)

BA Charts affected - 3179 (INT 7229) - 3778 - 3779 - 3780

Source: Admiralty Notice to Mariners No. 1064(P)/2022.

39(T)/22 UNITED ARAB EMIRATES - Obstruction.

1. An obstruction has been reported in position 25° 20'·91N., 55° 08'·62E.
2. Mariners are advised to navigate with caution in the area.
(WGS84 DATUM)

BA Charts affected - 2837 (INT 7017) - 2887 (INT 7232) - 2888 (INT 7199) - 2889 (INT 7211) - 3175 (INT 7212) – 3176 (INT 7216) - 3412 (INT 7219)

Source: Admiralty Notice to Mariners No. 1113(T)/2022.

PART – II
RADIO NAVIGATIONAL WARNINGS

114/22. CENTRAL GULF. Qatar. Charts BA 2837, 2886, and 2889. An unlit mooring buoy reported drifting in vicinity of position 25-48.771N 052-40.895E, on 201144 UTC Mar 22. Mariners are requested to navigate with caution. Cancel this message on 26 March 2022.

115/22. SOUTHERN Gulf. UAE. Charts BA 2837, 2858 and 2889. Seismic survey in progress till 27 Mar 22 in following areas:

Receiver boundary
25-01.45N 053-42.79E
25-01.35N 053-48.18E
24-56.21N 053-48.07E
24-56.31N 053-42.68E

Source boundary
25-01.45N 053-42.96E
25-01.35N 053-48.03E
24-52.98N 053-47.84E
24-53.07N 053-42.78E

Fishing, anchoring and diving operations are strictly prohibited in survey areas. Mariners are advised to navigate with caution and maintain listening watch on channels 16/72. Cancel this message on 272359 UTC Mar 22.

116/22. SELF CANCELLING. Cancel Navarea IX warning 114 of 2022.

117/22. PAKISTAN. Ormara. Charts Pak 24, 33, 58 (INT 7019) and BA 38. Rodrigues shoal buoy in position 25-11.10N 064-43.86E reported adrift. Mariners are requested to navigate with caution.

118/22. Southern Gulf. UAE. Charts BA 2837, 2889 and 3177. Seismic survey in progress till 30 Mar 22 in following areas:

Receiver boundary
24-27.05N 054-04.77E
24-26.80N 054-19.33E
24-23.16N 054-19.33E
24-23.40N 054-04.77E

Source boundary
24-28.76N 054-07.35E
24-28.76N 054-15.93E
24-21.60N 054-15.93E
24-21.60N 054-07.35E

Fishing, anchoring and diving operations are strictly prohibited in survey areas. Mariners are advised to navigate with caution and maintain listening watch on channels 75. Cancel this message on 302359 UTC Mar 22

119/22. Pakistan. Gwadar. Charts Pak 26, 27, 33, 57 (INT 751), BA 38 and 707. Firing practice with live ammunition will be carried out on 29 and 30 Mar 22. Details as under:

Position : 25-05.88N 062-22.27E
Safety range : 20000 meters
Firing arcs : 130-220 degree (clockwise)
Time : 0300-1200 UTC

Vessels are requested to keep well clear of assigned danger area on above specified schedule. Cancel this message on 301400 UTC Mar 22

120/22. SELF CANCELLING. Navigational Warnings Inforce:

2020 series: 004
 2021 series: 024, 086, 109, 223, 224, 292, 336, 368, 372, 397, 398, 399, 408, 421, 445, 448, 475, 477, 481, 490, 491, 492, 503 and 513.
 2022 series: 020, 021, 027, 030, 039, 041, 066, 067, 068, 069, 070, 079, 080, 081, 085, 090, 091, 095, 100, 101, 102, 103, 107, 109, 110, 112, 115, 117, 118 and 119.

COASTAL WARNING

033/22. PAKISTAN. Ormara. Charts PAK 24, 33, 58 (INT 7019) and BA 38. Rodrigues shoal buoy in position 25-11.10N 064-43.86E reported adrift. Mariners are requested to navigate with caution.

034/22. PAKISTAN. Gwadar. Charts PAK 26, 27, 33, 57 (INT 751), BA 38 and 707. Firing practice with live ammunition will be carried out on 29 and 30 Mar 22. Details as under:

Position : 25-05.88N 062-22.27E
 Safety Range : 20000 Meters
 Firing Arcs : 130-220 Degree (Clockwise)
 Time : 0300-1300 UTC

Vessels are requested to keep well clear of assigned danger area on above specified schedule. Cancel this message on 301500 UTC Mar 22.

035/22. SELF CANCELLING. Navigational Warnings Inforce:

2020 Series: 143.
 2021 Series: 095 and 136.
 2022 Series: 021, 024, 027, 028, 031, 033 and 034

WPGs Inforced 2022: 06
 WPGs Cancelled 2022: 07 and 08

TEMPORARY AND PRELIMINARY NOTICES

In Force 18 March 2022

(Former In Force List dated 18 February 2021 is cancelled)

Inforce: 55(T)/13, 92(T)/13, 92(T)/14, 51(T)/16, 136(P)/16, 150(P)/16, 173(P)/16, 83(P)/17, 99(T)/17, 115(P)/17, 129(P)/17, 140(T)/17, 169(T)/17, 176(T)/17, 184(P)/17, 57(T)/18, 101(T)/18, 131(P)/18, 27(P)/19, 55(P)/19, 65(P)/19, 73(T)/19, 78(T)/19, 108(P)/19, 110(P)/19, 112(P)/19, 173(T)/19, 213(T)/19, 229(T)/19, 234(P)/19, 04(P)/20, 58(T)/20, 65(T)/20, 87(T)/20, 95(P)/20, 111(P)/20, 134(P)/20, 135(T)/20, 139(P)/20, 140(P)/20, 160(T)/20, 176(P)/20, 191(P)/20, 04(T)/21, 06(T)/21, 15(T)/21, 42(P)/21, 46(T)/21, 56(P)/21, 69(T)/21, 98(P)/21, 109(P)/21, 110(T)/21, 111(T)/21, 122(P)/21, 124(T)/21, 137(P)/21, 143(T)/21, 144(P)/21, 145(P)/21, 156(T)/21, 158(T)/21, 15(P)/22, 16(P)/22, 17(P)/22, 20(P)/22, 21(P)/22, 25(T)/22, 26(P)/22, 29(T)/22, 37(P)/22, 38(P)/22 and 39(T)/22

Cancelled: 24(T)/21, 95(P)/21, 118(T)/21 and 24(P)/22

PART – III

CORRECTIONS TO SAILING DIRECTIONS

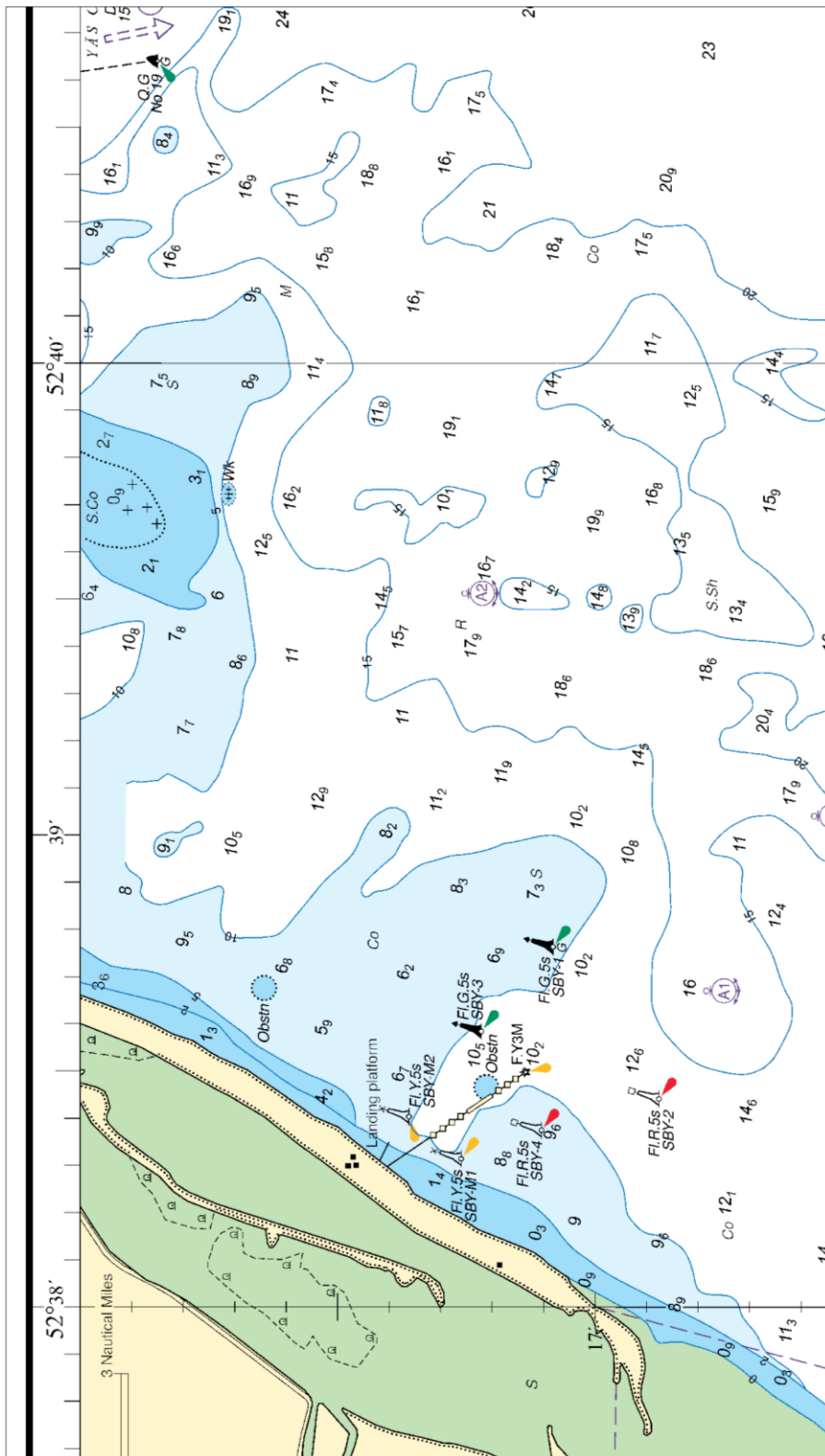
Nil

PART – IV

MARINE INFORMATION

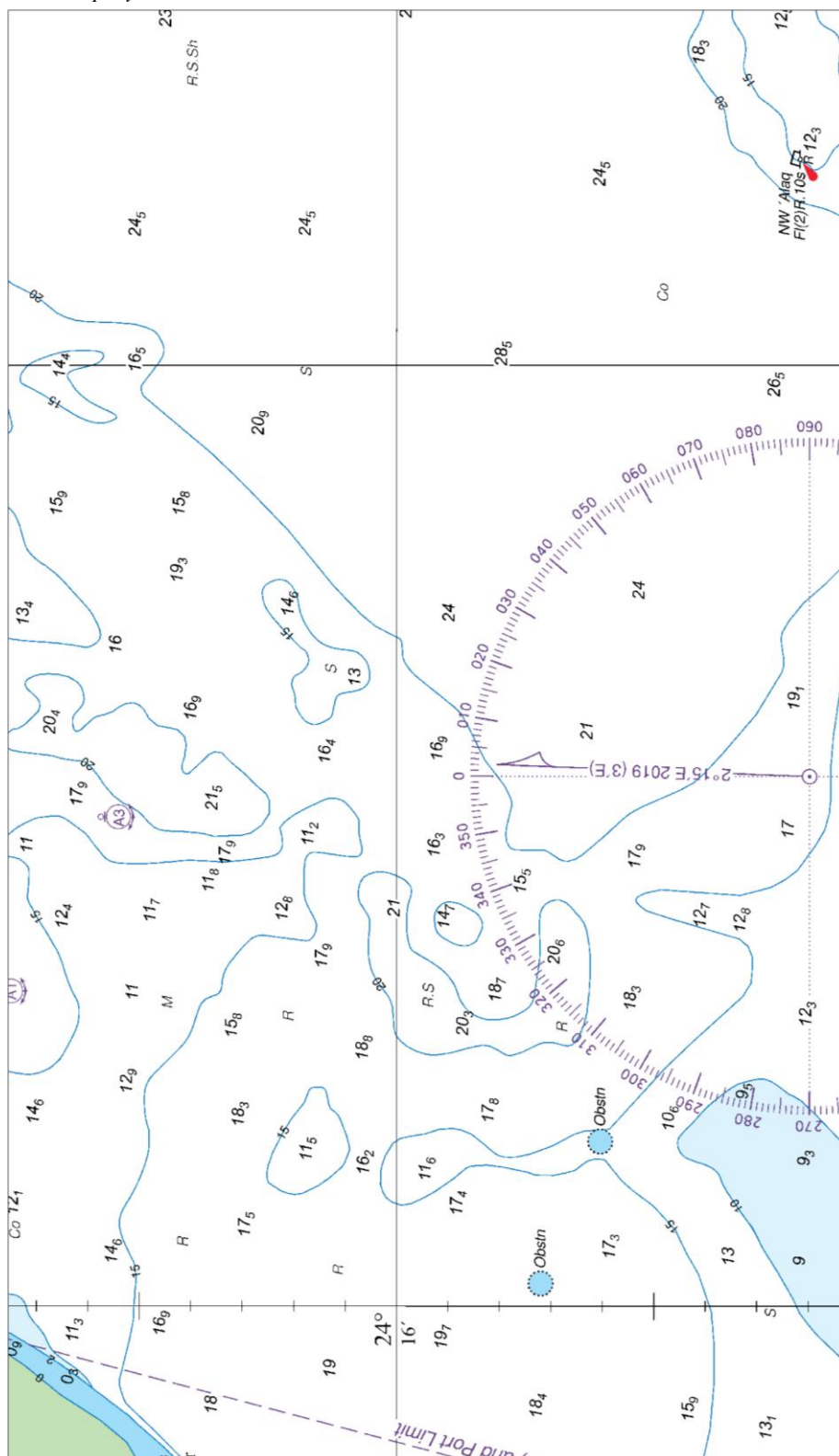
Nil

To accompany Pakistan Notice to Mariners 35/22.



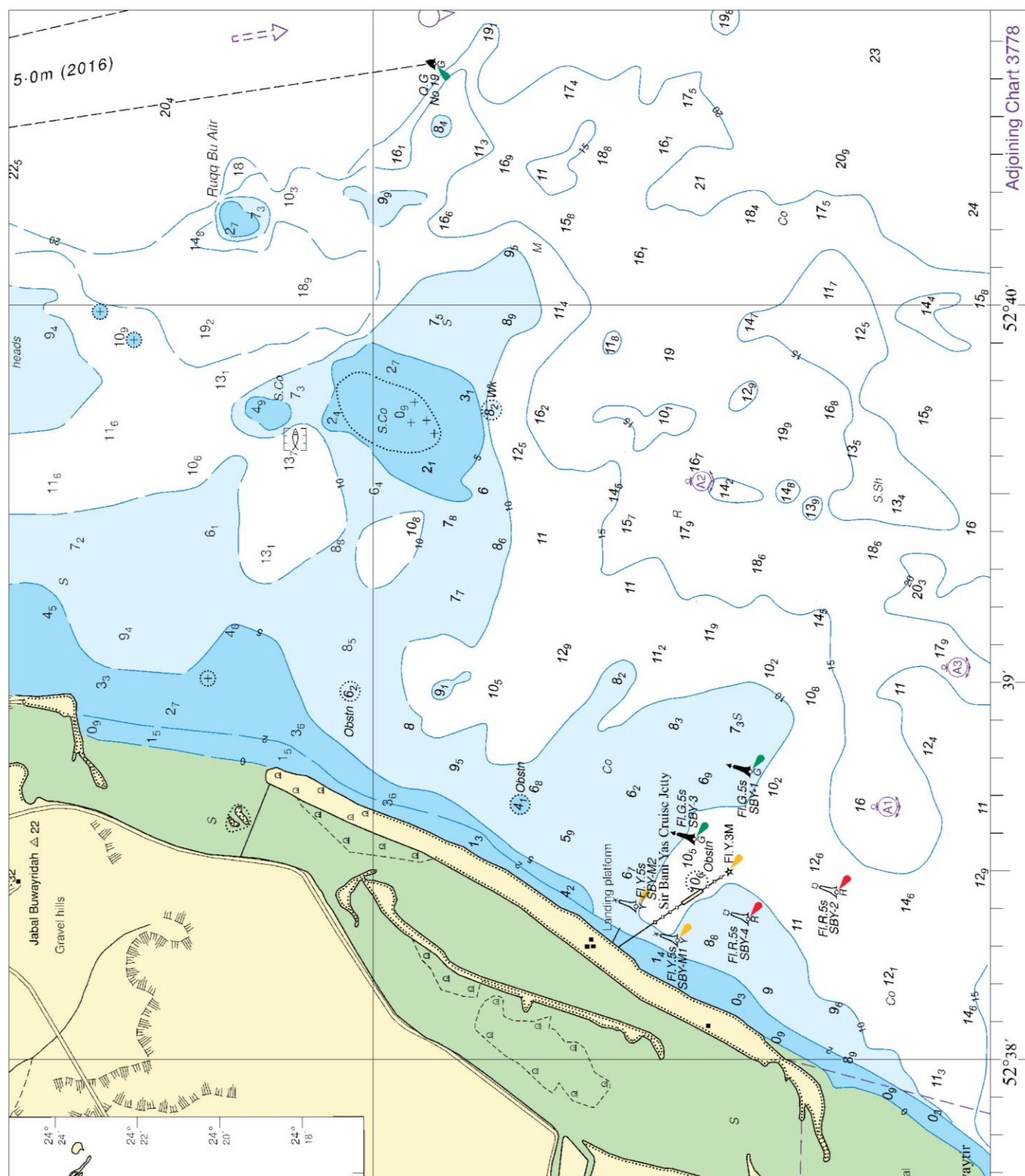
Block A for BA Chart No 3778

To accompany Pakistan Notice to Mariners 35/22.



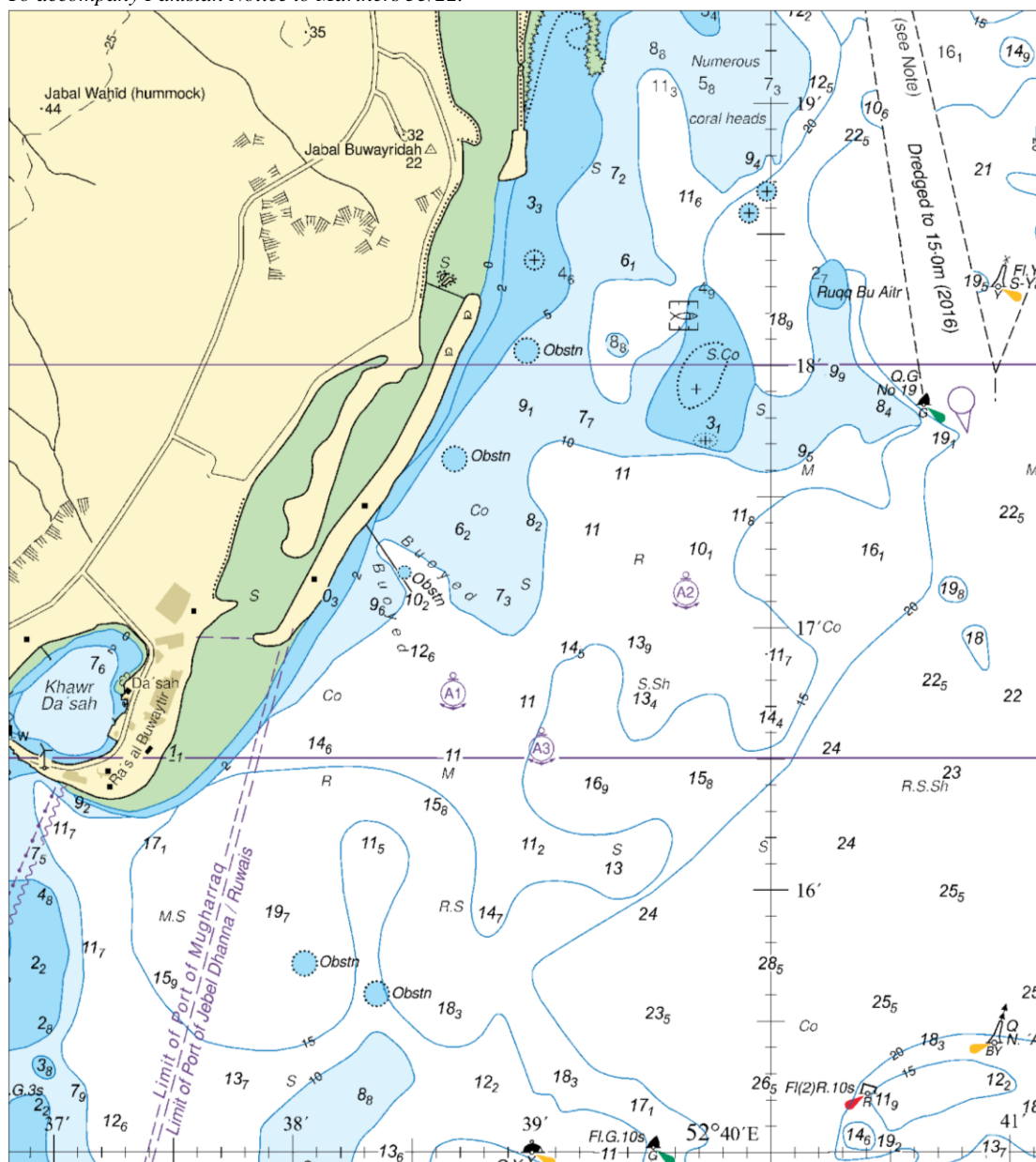
Block B for BA Chart No 3778

To accompany Pakistan Notice to Mariners 35/22.



Block for BA Chart No 3779

To accompany Pakistan Notice to Mariners 35/22.



Block for BA Chart No 3780

NP77, Vol D Edition 2021. Weekly Edition No. 12, Dated 24 March 2022.
Last Updates: Weekly Edition No. 11, dated 17 March 2022.

D2197-2 PT, I, 491	- Vilamoura	37 04-47 N 8 07-38 W	Fl W 5s	17	19 Yellow tower on Navy control tower 16 *	fl 0-2
D2216	SOUTH COAST. RIA FORMOSA. CANAL DE FARO Remove from list; deleted					
D2349-57	SOUTH-WEST COAST. RÍO GUADALQUIVIR Remove from list; deleted					
D2349-69	SOUTH-WEST COAST. RÍO GUADALQUIVIR Remove from list; deleted					
D2793-5 ES, I, 12165	- Puerto del Rosario. Punta Gavioto - - - Reserve light - - -	28 30-32 N 13 50-62 W	Fl W 5s Fl W 5s AIS	47	20 White round tower 43 9 * * *	fl 0-5 .. MMSI No 992241164 *
D7620-5	- Khowr-E Bahmanshir. No 6	29 58-67 N 48 43-62 E	Fl(2)W 6s	..	7
*	*	*	*	*	*	*
D7620-7	- Khowr-E Bahmanshir. No 2	29 57-48 N 48 44-53 E	Fl W 1-5s	..	7
*	*	*	*	*	*	*
D7678-2	Deyyer. Breakwater	27 50-00 N 51 56-00 E	Fl(2)R 6s *	4	7 Red pile beacon * *	..